

4th Nottwil Wound Forum

Friday May 15th 2009

09.00 to 17.00

Swiss Paraplegic Center
Nottwil, Switzerland



«Global synergy in wound management -
turning worldwide cooperation to practical use»

Powered by:  **smith&nephew**

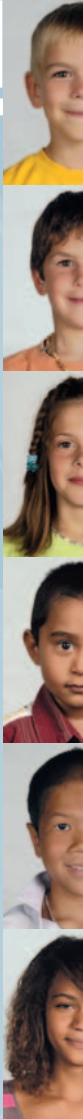




Advice in care and rehabilitation

ParaHelp is an association supporting persons with spinal cord injury and further diseases with neurological failures. This order ParaHelp is carrying out in the home care in whole Switzerland.

The supply is a part of the extensive performance of the integrated rehabilitation of paraplegics supported by the Swiss Paraplegic Foundation.



Gobal synergy - our world is growing together

Dear guests

Because of the real estate crisis in the USA suffers a noted Swiss bank billions of dollars loss. This is called globalization. Because of a bird influence in Hong Kong a watch- and jewelry fair in Basel has been cancelled. This is globalization as well.

Once opponents became partners in business worldwide. Because we know how the things are linked in the world we realize them in a different way and we develop increasingly an understanding what globalization means. Out of once enemys arised win - win partners. Because we made out, we can take advantage of our global sustainable responsibility.

The 4th Nottwil Wound Forum is dedicating the theme of global synergys in wound management.

Has the worldwide interlink an influence in caring wounds? How is the effect of hardship among refugees and the opening to East Europe? Can we profit knowledge from professional colleagues coming out of poorer countries? All these questions we will discuss at SKINTACT.

New challenges are coming. The 4th Nottwil Wound Forum covers a range of interesting topics. We warmly welcome you to SKINTACT. Please be our guest!

Uwe Kaufhold
Chairman SKINTACT

Diary 4th Nottwil Wound Forum, May 15th 2009

State: 30th October 2008

Time	Location	Subject	Speaker
09.00 - 09.10 Uhr	Aula	Opening	Uwe Kaufhold
		Welcoming address	Max Moor
09.10 - 09.20 Uhr	Aula	Congressnavigation	Uwe Kaufhold
09.20 - 09.40 Uhr	Aula	The health policy through the ages	Thomas Zeltner
09.40 - 10.00 Uhr	Aula	Are the standard infection control measures enough?	Vittoria La Rocca
10.00 - 10.20 Uhr	Aula	Blood donation in the feature of globalisation	Christoph Niederhauser
10.20 - 11.00 Uhr	Halle See	Coffee break	Visiting the commercial exhibition
11.00 - 11.10 Uhr	Aula	Choice of the Parallelsessions	Uwe Kaufhold
11.10 - 11.30 Uhr	Aula	speech just becomes named	Speaker Smith & Nephew
11.30 - 11.50 Uhr	Aula	Extracellular Matrix Protein for hard-to-heal-wounds	Theis Huldt-Nyström
11.50 - 12.10 Uhr	Aula	Improoving the woundcare in Africa	Eric Comte
12.10 - 12.30 Uhr	Aula	Development of wound services globaly	Christine Bloch Suzanne Leaphart

Time	Location	Subject	Speaker
12.30 - 14.00 Uhr		Lunch break	Visiting the commercial exhibition
14.00 - 14.15 Uhr	Aula	Introduction of the Parallelsessions	Uwe Kaufhold
14.15 - 15.00 Uhr	Aula	Negative pressure therapy by Chariker/Jeter - known technology new discovered	Andrea Bachmann
	Auditorium 1	Ulcers and the mind-body hole	Christine Bloch / Suzanne Leaphart
	Auditorium 2	Excess of the MMP's? The way into the balance	Regina Bruggisser
	KR Luft	Extracellular Matrix - questions, answers, experiences	Barbara Bezjak
	KR Wasser	Modern wound management and the significance of nutritional therapy	Aude Germanier
15.00 - 15.40 Uhr	Halle See	Coffee break	Visiting the commercial exhibition
15.40 - 16.25 Uhr			Parallelsessions / Repitition
16.30 - 16.45 Uhr 16.45 Uhr	Aula Aula	Conclusion Social event	like usual with original Swiss music and typical drinks and appetizer's



**SKIN
TACT**

Speakers and presenters



Dr. Regina Bruggisser

Project Leader R&D
IVF HARTMANN AG
Neuhausen/Switzerland



Dr. med. Eric Comte

Médecins sans frontières
Suisse, Geneva/Switzerland



Uwe Kaufhold

ParaHelp, Chairman SKINTACT
Nottwil



Max Moor

Manager ParaHelp
Nottwil



Vittoria La Rocca

Infection control nurse
Swiss Paraplegic Center Nottwil / Switzerland



Dr. med. Christoph Niederhauser

Swiss blood donation service
SRK Bern/Switzerland



Dr. med. Theis Huld-Nyström

Consultant Dermatologist
Levanger and Namsos, Norway



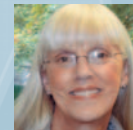
Prof. Dr. Thomas Zeltner

Director Federal Health Department
of Switzerland



Christine Blocher

Nurse, Teacher for nursing sciences,
speaker PAUL HARTMANN AG,
Heidenheim/Germany



Suzanne Leaphart

MA, BSN, RN, CWS, Clinical Director
Advanced Wound Recovery of Boston/USA



Andrea Bachmann

Nurse, CWS, Clinical specialist
Smith & Nephew AG, Solothurn,
Switzerland



Barbara Bezjak

Nurse, CWS
Mölnlycke Health Care AG
Switzerland



Aude Germanier

Nestlé HealthCare Nutrition
Switzerland

Hints for participants

Please use for registration until the latest **24th April 2009** the registration form in the internet (www.parahelp.ch or www.skintact.org) or fax the registration form of this booklet. (+41 41 939 60 61).

Participation fee

The participation fee is CHF 190.- or Euro 120.- per person (incl. VAT) Lunch and coffee breaks are provided.

Accommodation

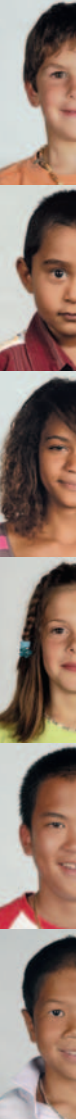
In the GZI Seminar- und Kongresshotel in Nottwil you'll find modern and comfortable Hotelrooms.

For reservation please contact:

GZI Seminar- und Kongresshotel

Guido A. Zäch Strasse 4, CH - 6207 Nottwil
Telefon +41 41 939 60 00
Telefax +41 41 939 64 65
hotelerie@kongresshotel-gzi.ch
www.kongresshotel-gzi.ch

SKIN
TACT



Quickly and comfortably to your destination

The Swiss Paraplegic Centre (SPC) and the nearby Guido A. Zäch Institute (GZI) in Nottwil can be reached from each direction comfortably and quickly by car and public transport.

By train and bus

Nottwil SBB railway station lies 700 metres from SPC and GZI. It is wheelchair accessible and is equipped with lift-on / lift-off services. Trains travel in both directions hourly from Nottwil to Basel (via Sursee /Olten), from Sursee to Zofingen, Bern, Geneva and to Lucerne (connections to Zurich and Lugano). SPC and GZI are each ten minutes walking distance from the railway station and also have an hourly bus service to and from Sursee.

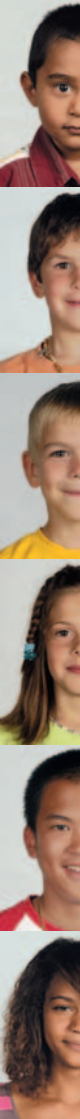
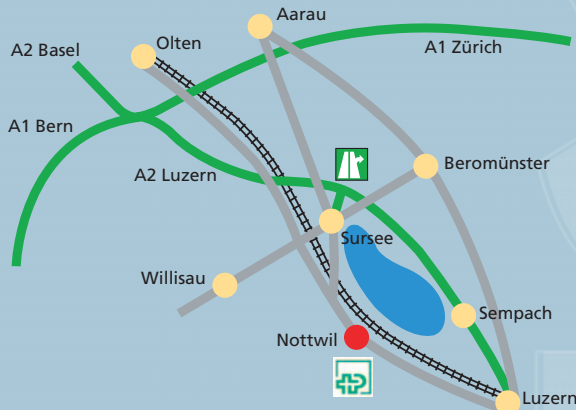
By car

The A2 motorway (Basel/Lucerne) passes close by and from the Sursee exit (20) onwards both SPC and GZI are well signposted. On your arrival there are open and underground car parking spaces available for your convenience. Zurich-Kloten and Basel EuroAirport are each about one hours drive away.

For further informations

ParaHelp
Susanne Weibel
Guido A. Zäch Strasse 1
CH-6207 Nottwil

Phone +41 41 939 60 60
Fax +41 41 939 60 61
Info@parahelp.ch
www.parahelp.ch
www.skintact.org





SKIN TACT



Para
Help
5?

SKINTACT
4th Nottwil Wound Forum
Friday May 15th 2009



STAMP

SKIN

TACT

ParaHelp
Guido A. Zäch Strasse 1
CH-6207 Nottwil



I register

**SKINTACT 4th Nottwil Wound Forum
Friday May 15th 2009**

NAME

FIRST NAME

FIRM

FUNCTIONING

HOME ADDRESS

BILL ADDRESS

PHONE

E-MAIL-ADDRESS

DATE

SIGNATURE

SKIN TACT

www.skintact.org

Please fax the register form
until latest **24th April 2009**.

ParaHelp

Susanne Weibel
Guido A. Zäch Strasse 1
CH-6207 Nottwil

Phone +41 41 939 60 60

Fax +41 41 939 60 61

Info@parahelp.ch

www.parahelp.ch



SKINTACT is a congress without
papers. We need your E-Mail-
address for the delivery of all
congress documents.

Powered by:

