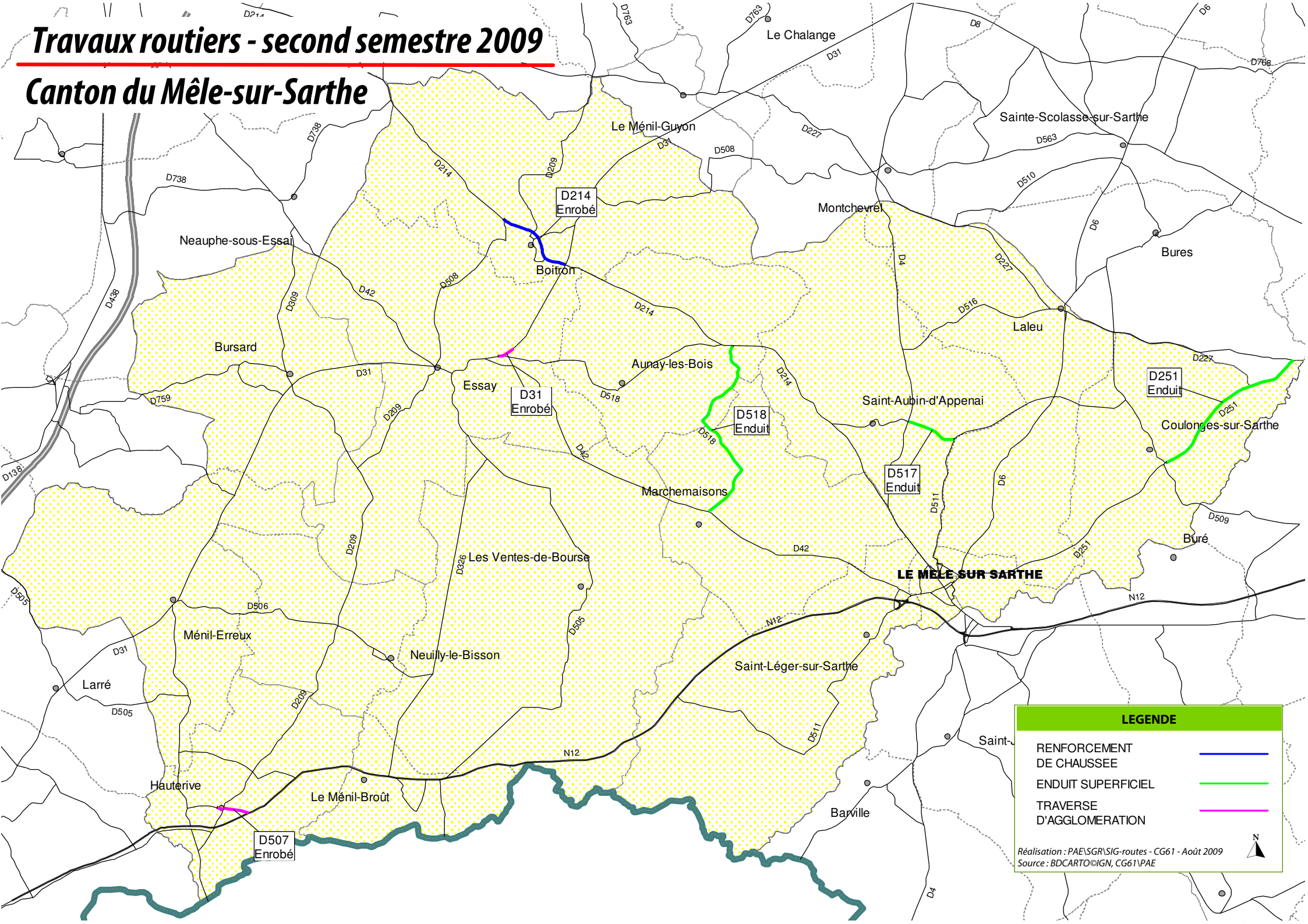





# Travaux routiers - second semestre 2009

## Canton du Mêle-sur-Sarthe



### LEGENDE

- REINFORCEMENT DE CHAUSSEE 
- ENDUIT SUPERFICIEL 
- TRAVERSE D'AGGLOMERATION 

Réalisation : PAESGR/SIG/routes - CG61 - Août 2009  
Source : BDCARTO@IGN, CG61/PAE

