








# Colorama 1



# Colorama 1

Gewebe	DIN 60 001		100% Polyester
Flächengewicht (g/m <sup>2</sup> )	DIN EN 12127		135
Gewebedicke (mm)	DIN ISO 2286-3		0.33
Ausrüstungsarten			versteift oder deko
Stoffbreite (cm)			200 (versteift), 340 (deko)
Schwerentflammbarkeit			B1 (DIN 4102), Typ C (BS 5867), M2 (NF P 92501-7)
Lichtechtheit	DIN ISO 105-B02		5-7
Pflegehinweise			ca. 1% Längeneingang möglich
Geeignet für Konfektionsart Wave®			Ja

## Solar und Optische Kennzahlen (DIN EN 410) Alle Werte sind Nennwerte mit einer Toleranz von +/- 5%.

Farbe	400	401	402	404	405	406	407	408	409	410	411	413	414	415	416	418	420	421	422	423	427	428	429	433	436	437	438	439	440	441	442	443	445	446	447	448	460	463	469	476	
<b>T<sub>v</sub></b>	52.91	51.51	54.39	35.66	31.37	19.37	36.57	41.41	17.52	55.27	23.74	31.08	51.32	49.10	34.67	46.11	19.33	43.55	37.25	23.10	13.01	29.28	37.85	20.97	30.53	25.67	43.18	45.29	50.50	50.55	47.84	22.35	28.62	22.01	30.61	19.92	37.17	46.11	36.11	37.96	
<b>R<sub>v</sub></b>	44.22	39.63	41.82	23.37	16.11	5.15	25.32	29.38	4.75	42.93	10.15	19.03	43.53	41.47	24.23	37.01	5.28	34.43	26.32	10.21	2.51	20.85	25.75	3.75	17.89	13.73	38.39	41.30	37.32	39.14	35.07	9.37	15.79	8.72	19	6.53	31.61	34.33	28.90	30.77	
<b>A<sub>v</sub></b>	2.87	8.86	3.79	40.97	52.52	75.48	38.11	29.21	77.73	1.80	66.11	49.89	5.15	9.43	41.10	16.88	75.39	22.02	36.43	66.69	84.48	49.87	36.40	75.28	51.58	60.60	18.43	13.41	12.18	10.31	17.09	68.28	55.59	69.27	50.39	73.55	31.22	19.56	34.99	31.27	
<b>T<sub>s</sub></b>	53.09	52.43	54.13	43.69	16.11	36.81	45.45	46.48	35.15	55.05	28.97	43.14	50.64	48.04	43.48	48.90	27.01	46.26	44.37	41.07	32.67	40.36	46.72	39.40	42.62	40.17	43.93	47.46	62.21	39.26	37.80	41.67	37.79	42.40	35.14	38.64	43.92	49.97	44.78	45.56	
<b>R<sub>s</sub></b>	44.75	40.61	41.60	33.16	30.36	25.52	39.17	34.29	26.45	42.42	39.50	33.31	42.47	40.14	34.10	39.95	27.01	36.70	44.34	29.74	24.84	33.46	35.38	23.13	31.90	31.80	38.25	43.63	39.50	41.16	38.26	27.42	31	31.67	32.83	27.11	38.64	43.92	44.78	45.56	
<b>A<sub>s</sub></b>	2.16	6.96	4.27	22.08	25.95	37.67	19.16	19.23	38.40	2.53	31.53	23.55	6.89	11.82	22.42	11.15	33.82	17.04	21.29	29.19	42.49	26.18	17.90	37.47	25.48	28.03	8.91	8.13	6.63	9.37	34.78	27.33	27.33	34.85	35.14	17.44	11.58	16.30	15.27	15.27	
<b>UV</b>	51.50	41.36	45.67	27.08	28.54	18.31	31.83	31.53	19.71	47.36	27.10	31.27	38.52	33.37	30.87	34.55	20.12	31.08	25.20	21.88	15.79	19.89	34.25	25.30	25.10	25.89	24.66	36.06	43.15	44.21	42.36	20.70	27.65	22.27	28.76	23.67	32.16	38.54	35.03	33.97	
<b>g<sub>tot</sub></b>	0.49	0.51	0.50	0.54	0.55	0.57	0.53	0.53	0.56	0.50	0.55	0.53	0.50	0.50	0.53	0.51	0.56	0.52	0.53	0.55	0.57	0.53	0.53	0.58	0.75	0.75	0.71	0.68	0.71	0.70	0.71	0.77	0.75	0.76	0.74	0.78	0.71	0.71	0.71	0.71	0.71
<b>F<sub>c</sub></b>	0.68	0.70	0.70	0.74	0.76	0.79	0.73	0.74	0.78	0.69	0.77	0.74	0.69	0.70	0.74	0.70	0.78	0.72	0.74	0.76	0.79	0.74	0.73	0.80	0.75	0.75	0.71	0.68	0.71	0.70	0.77	0.75	0.77	0.74	0.78	0.71	0.71	0.71	0.71	0.71	0.71

**T<sub>v</sub>** Lichttransmissionsgrad (%)

**R<sub>v</sub>** Lichtreflexionsgrad (%)

**A<sub>v</sub>** Lichtabsorptionsgrad (%)

**UV** UV-Transmissionsgrad (%)

**F<sub>c</sub>** Abminderungsfaktor (pf EN 14501 2005)

**T<sub>s</sub>** Strahlungstransmissionsgrad (%)

**R<sub>s</sub>** Strahlungsreflexionsgrad (%)

**A<sub>s</sub>** Strahlungsabsorptionsgrad (%)

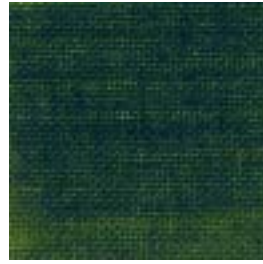
**g<sub>tot</sub>** Gesamt g-Wert (Glas g-Wert: 0,72; 1,6 W/m<sup>2</sup> K) DIN EN 13363-1



411



447



443



427



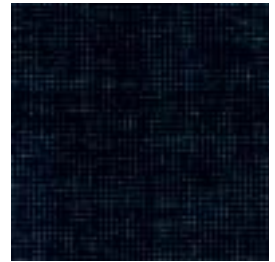
429



413



448



409



476



469



445



446



441



460



416



433



400



414



415



408



410



440



442



407



402



439



418



436



401



463



421



438



404



428



422



423



406



405



437



420