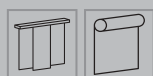










Superscreen



Superscreen

Gewebe	DIN 60 001		Glasfaser, PVC ummantelt (42% Glasfaser, 58% PVC)
Flächengewicht (g/m ²)	DIN EN 12127		535
Gewebedicke (mm)	DIN ISO 2286-3		0.75
Stoffbreite (cm)			285
Öko-tex Standard 100	LYC 05-3663 ASQUAL		Ja
Schwerentflammbarkeit			B1 (DIN 4102), M1 (NF P 92501-7)
Lichteinheit	DIN ISO 105-B02		7-8
Feuchtraumgeeignet			Ja
Pflegehinweise			

Solar und Optische Kennzahlen (DIN EN 14501) Alle Werte sind Nennwerte mit einer Toleranz von +/- 5%.

Farbe	0101	0102 (front)	0102 (reverse)	0130 (front)	0130 (reverse)	0202	0207 (front)	0207 (reverse)	0707	2020	3030
T_s	5	10	10	5	5	25	16	16	9	21	4
R_s	16	35	26	11	14	58	45	52	40	48	5
A_s	79	55	64	84	81	17	39	32	51	31	91
g_{tot}^2	0.50	0.45	-	0.52	-	0.38	0.42	-	0.43	0.41	0.54
g_{tot}^3	0.29	0.27	-	0.29	-	0.26	0.27	-	0.27	0.27	0.30
T_v	4	9	-	4	-	25	14	-	7	19	4
$T_{v-n-diff}$	1	4	-	1	-	19	10	-	3	16	1
T_{v-n-n}	3	5	-	3	-	6	4	-	4	3	3

T_s Strahlungstransmissionsgrad (%)

R_s Strahlungsreflexionsgrad (%)

A_s Strahlungsabsorptionsgrad (%)

g_{tot}^2 Gesamt g-Wert (Glas g-Wert: 0,59; 1,2W/m²/K)

g_{tot}^3 Gesamt g-Wert (Glas g-Wert: 0,32; 1,1W/m²/K)

T_v Lichttransmissionsgrad (%)

$T_{v-n-diff}$ Senkrecht/diffuser Lichttransmissionsgrad

T_{v-n-n} Senkrecht/senkrechter Lichttransmissionsgrad



0202



2020



0707



0101



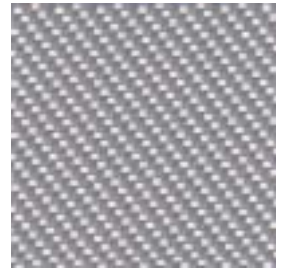
0207 (recto)



0207 (verso)



0102 (recto)



0102 (verso)



0130 (recto)



0130 (verso)



3030