



SHARING THE SPIRIT OF THE COMPANY

Training and Team Building Programs

www.quelsens.com

info@quelsens.com

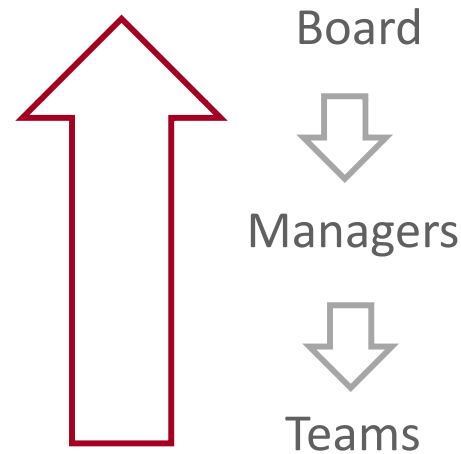
administrative authorization n° 11 75 44 307 75

TRAINING THE MANAGERS

on the **fundamentals**
of the company



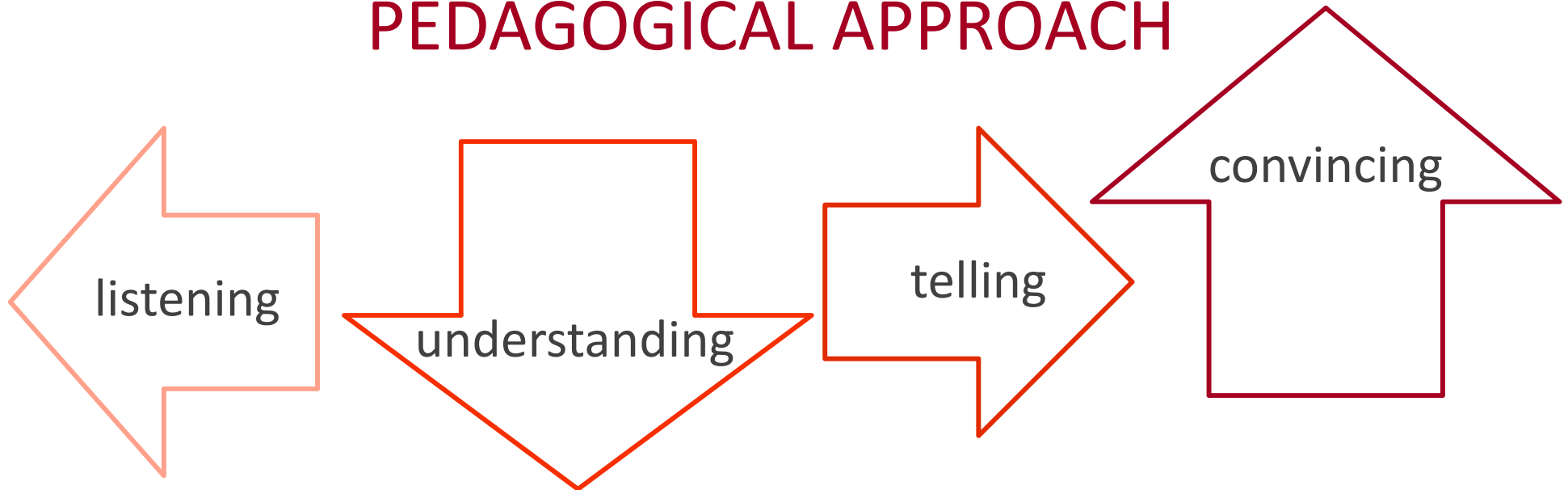
for a **2-way** link



**without
demagogy**

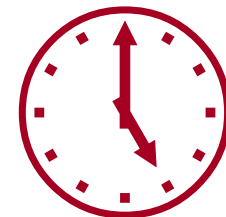
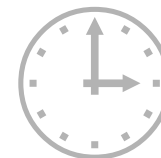
simple messages,
speaking from
experience

YOUR COMPANY IS AT THE CENTER OF OUR PEDAGOGICAL APPROACH



SO THAT EVERYONE CAN ADAPT TO ITS TIME

(merger, reorganization, integration of new teams, brand renewal, change of strategic direction, reinforcement of the cohesion amongst departments.....)



3 PROGRAMS, ADAPTED TO *YOUR* COMPANY

reinforce one's capacity to convince
(for Commercial People)

increase the leadership
(for Managers)

build together the company's projects
(for Managers and Teams)

*2 to 5 days of programs, continuous or spread in time,
to align oneself with this company, as it is now*

LEARNING FROM HUMAN STRENGTHS



*Sense of **sight**, to replace speculation by long-term visions.*

*Sense of **hearing**, to develop one's capacity of discernment.*

*Sense of **smell**, to increase one's flair.*

*Sense of **taste**, to work by affinity.*

*Sense of **touch**, to ensure that the folder you touch..... really touches.*

***INTUITION**, to give one the full wealth of one's difference.*

***Positive and interactive methods, based on your business situations
role plays – intuitive exercises (individually / within the group)***

ABOUT US



Tiphaine Scott de Martinville, founder

formerly a lawyer to the Paris bar

trained as an Artist Way At Work, member of CreaFrance

tifensmart@quelsens.com

+33 6 28 53 42 72

Having spent over ten years working as a corporate lawyer in Anglo-Saxon law firms and in banking, Tiphaine has a deep knowledge of the corporate world and of top management expectations. But abandoning the teams after the closing of an acquisition, just when the human challenge really starts, was very frustrating to her. All the more so, at the same time, she was developing her practice as a painter. In order to increase her creative abilities, she learnt creativity techniques, in Paris and in San Francisco, and then became a coach herself.

Today, combining the legal strictness with the potentialities of the paintbrush, she is working as a consultant and a coach along to axes:

- handing back to Managers the meaning of the fundamentals of the company,
- fostering everyone's ability to create the new.

Searching for the right consultant at the right time, QuelSens works with a specific network in order to adapt to your needs and expectations (HCB Consultants, Adéquat International, NextCreativity).